

REF

70200008



Check product function - Kontrollera produktens funktion

Visual inspection - Visuell inspektion

Check product function regularly. Ensure that the material is free from damage. If damage is apparent, the product must be discarded.

Kontrollera produktens funktion regelbundet. Kontroller att materialet är oskadat. Vid synlig skada ska produkten kasseras.



Always read the manual - Läs alltid manualen

Always read the manuals for all assistive devices used during the transfer.

Keep the manual where it is easily accessible for users of the product.

Never leave a user unattended during a transfer.

Läs alltid bruksanvisningarna för alla hjälpmedel som används vid en förflyttning.

Förvara bruksanvisningen tillgänglig för användare av produkten.

Lämna aldrig en brukare under en förflyttning.

Table of contents

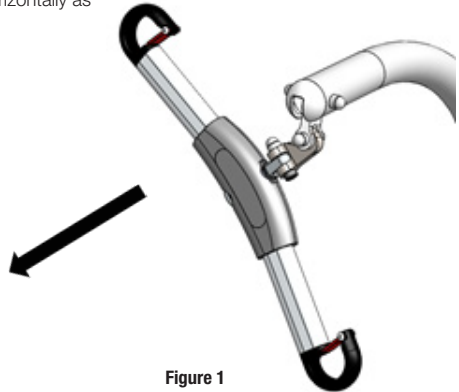
English	4
Svenska	7

Purpose

The purpose of this instruction is to show how to properly hook and unhook a slingbar with an attached Swifthood and from its place on a lift arm of a Handicare mobile lift. It is also to show how slingbar and lift that comes with an installed Swifthood may be used without it.

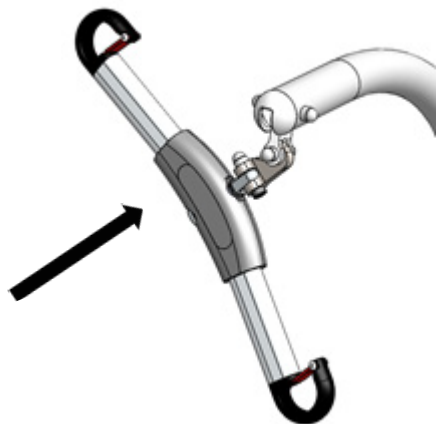
Hooking the Swifthood to a lift arm

1. Hold the sling bar with the Swifthood at an angle relative the lift arm according to the image.
2. Push the sling bar to the side so that it “hooks on” completely
3. Lower the sling bar so that it hangs freely and horizontally as described in section “Correct position” below.



Unhooking the Swifthood from a lift arm

1. Hold the sling bar with the Swifthood at an angle relative the lift arm according to the image.
2. Push the sling bar to the side so that it unhooks completely.



Correct position

The following figure 3,4 illustrates the correct position of a sling bar with Swifthook on a lift arm. The sling bar hangs freely and horizontally and the Swifthook is completely hooked on.

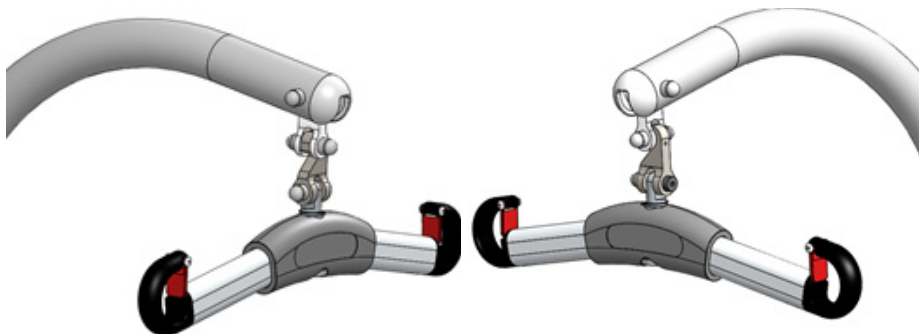


Figure 3,4

Incorrect and faulty position

The following illustrations shows incorrect position. Note the mark in, figure 5. In case the Swifthook ends up in this position, do not start the lift. If there is an ongoing lift discontinue by slowly lowering the lift arm with the hand control until the sling bar is unloaded. Then correct the sling bars position.

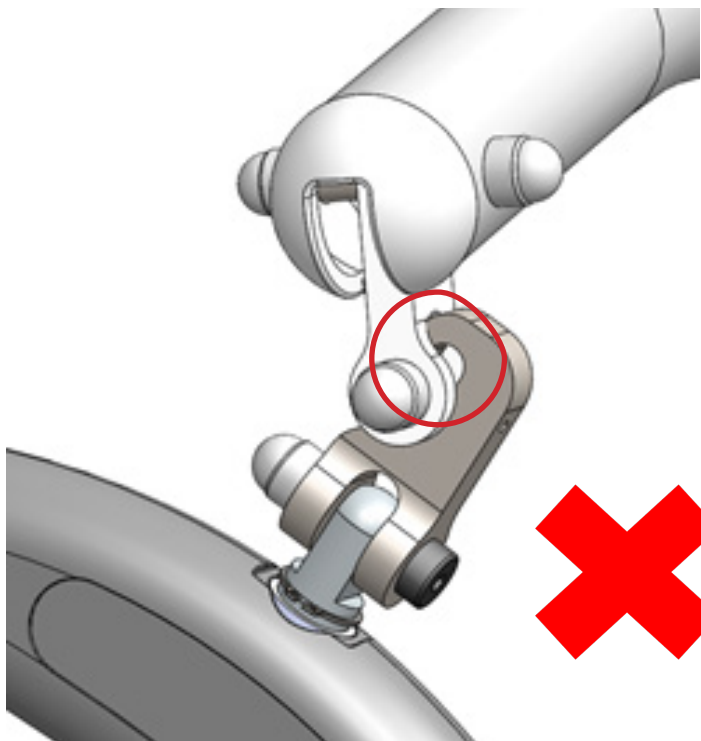


Figure 5

Incorrect and faulty position

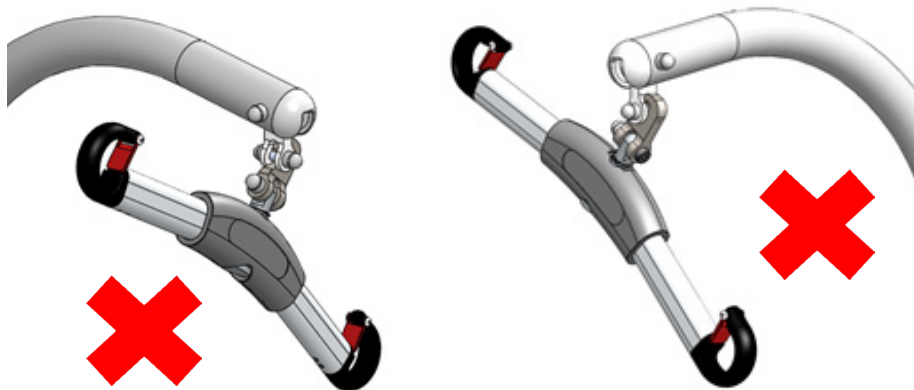


Figure 6,7

Removing the Swifthook from the slingbar

Remove the Swifthook using the appropriate Allen key (5mm) and wrench (13mm). See figure 8.

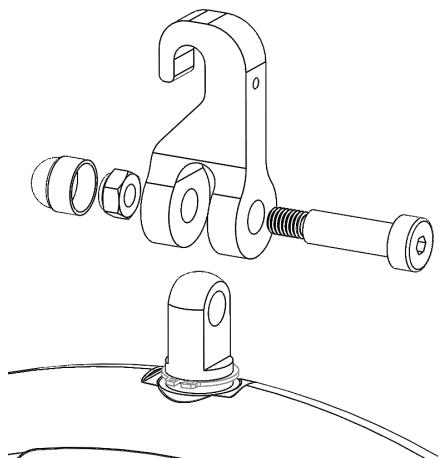


Figure 8

Attaching the Slingbar directly to the lift arm of the lift

Use two wrenches (13mm). Remove the Swifthook from the slingbar as in the previous section. Remove the fastener from the lift's link arm as in Figure 9. Attach the sling bar directly to the lift arm as in Figure 10 by using the existing fasteners from the link arm.

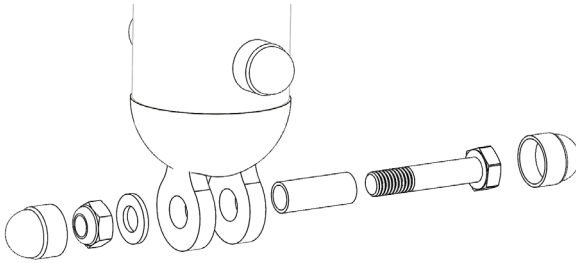


Figure 9

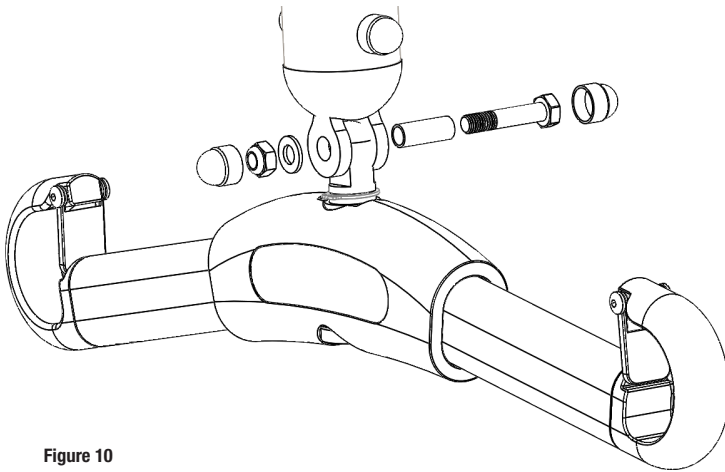


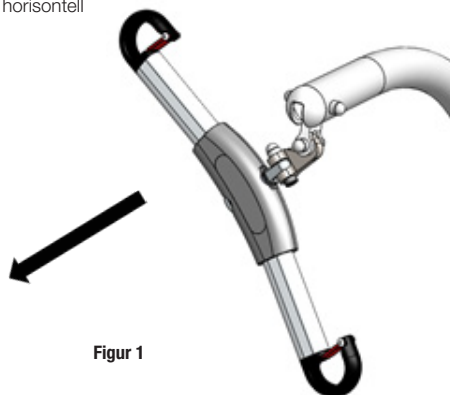
Figure 10

Syfte

Syftet med denna instruktion är att visa korrekt sätt att kroka på och av en lyftbygel med en Swifthook till och från en lyftarm på en mobil lyft från Handicare. Den visar också hur en lyftbygel och lyft som kommer med en monterad Swifthook kan användas utan Swifthook.

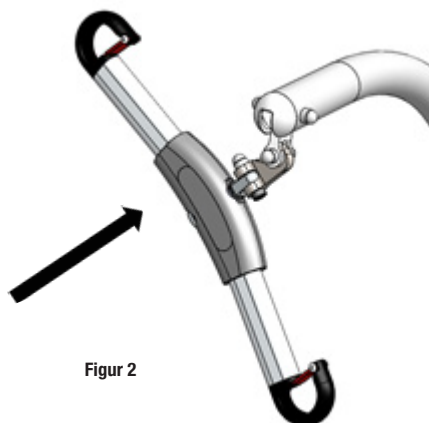
Kroka på en Swifthook på lyftarm

1. Håll lyftbygeln med Swifthook i en vinkel mot lyftarmen enligt bild.
2. För lyftbygeln åt sidan så att den krokas på helt.
3. Sänk sedan lyftbygeln sakta tills den hänger fritt i horisontell position enligt "Korrekt position" nedan



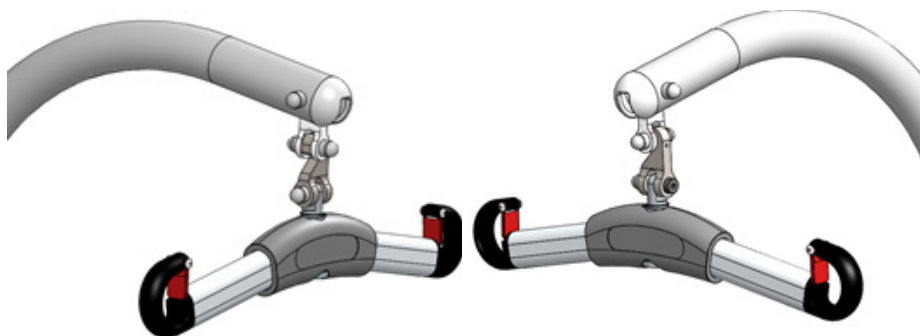
Kroka av en Swifthook från en lyftarm

1. Håll lyftbygeln i en vinkel mot lyftarmen enligt bild.
2. För lyftbygeln åt sidan så att den krokas av helt.



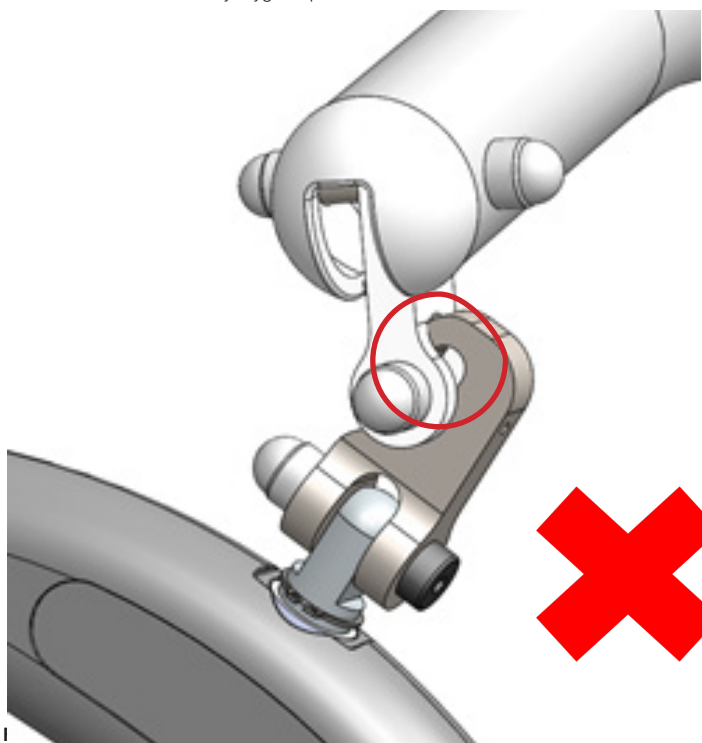
Korrekt position

Följande illustrationer visar korrekt position av Swifthook på lyftarmen. Lyftbygelhänger fritt och horisontellt och Swift-hook är fullständigt påkrokad.

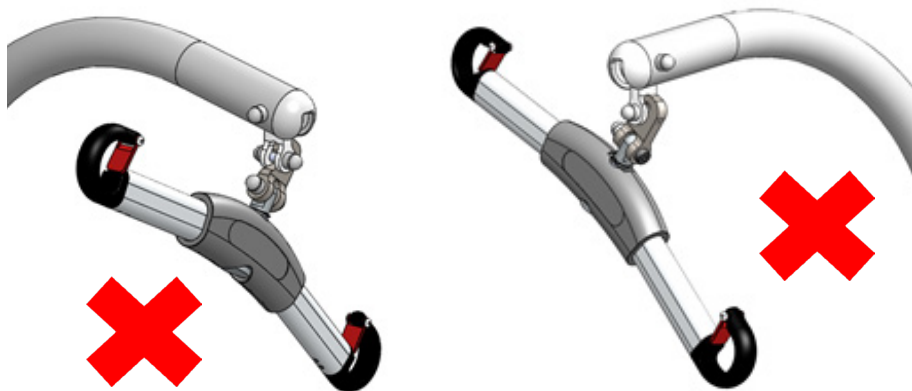


Felaktig position

Följande illustrationer visar felaktig position. Notera markeringen i figur 5. I de fall då Swifthook hamnar i denna position, påbörja ej lyftet. Om ett lyft pågår, avbryt genom att långsamt sänka lyftarmen mha handkontrollen tills lyftbygelhänger obelastad. Rätta sedan till lyftbygelns position.



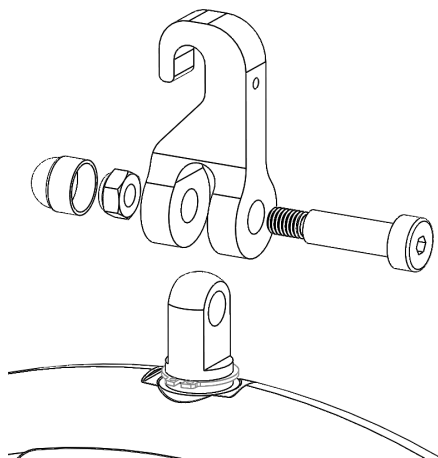
Felaktig position



Figur 6,7

Avmontering av Swifhook från lyftbygel

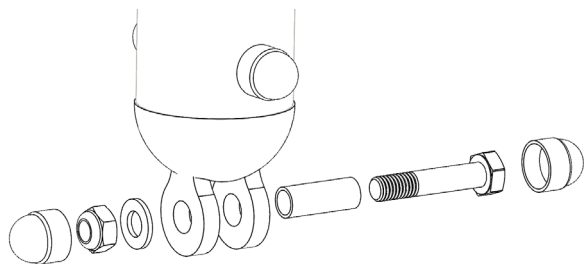
Montera av Swifhook mha en insexnyckel (5mm) och blocknyckel (13mm). Se figur 8.



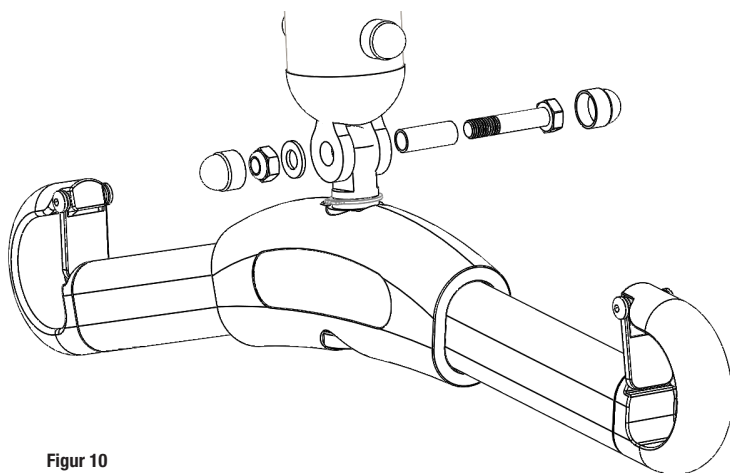
Figur 8

Montering av lyftbygel direkt på lyftarm utan Swifthook

Använd två blocknycklar (13mm). Montera av Swifthook enligt ovan. Montera av bult, mutter och bricka enligt figur 9. Montera lyftbygelns direkt på lyftarmen enligt figur 10, genom att använda de fästen som hör till lyftarmen.



Figur 9



Figur 10

Simple solutions for great results

Handicare offers a unique easy transfer concept, the market's widest and most comprehensive range of clever, easy-to-use and safe transfer and lifting aids designed to make life easier, both for the user and for the caregiver. We have a complete solution that provides for the majority of patient transfer or manual handling requirements. From the simplest to the most complex scenarios, from the lightest to the heaviest. The concept encompasses assistive devices for four different categories of transfers:

- Transfer, assistive devices for manual transfers of users between two locations.
- Positioning, assistive devices for manual repositioning of users within the same location.
- Support, assistive devices for mobility support e.g., during sit-to-stand or gait training.
- Lifting, assistive devices for manual and mechanical lifting of users.

Improved work environment, improved quality of care and cost savings

The Handicare patient transfer product range is focused on the prevention and reduction of occupational injuries while allowing users to experience a greater sense of independence and dignity. Through a unique combination of training and a complete range of efficient transfer aids, Handicare offers improvement of both work environment and quality of care and, at the same time, achieves significant cost savings.

Always make sure that you have the correct version of the manual

The most recent version of all manuals are available for downloading from our website; www.handicare.com.

For questions about the product and its use

Please contact your local Handicare representative. A complete list of all our partners with their contact details can be found on our website; www.handicare.com.

Handicare offers solutions and support to increase the independence of disabled or elderly people as well as to improve the convenience of those who are caring for them.

The Handicare Group is one of the leading healthcare companies in Europe with its own manufacturing organizations and sales companies in Norway, Sweden, Denmark, Germany, the Netherlands, Great Britain, France, China, Canada and the USA. Handicare's products are also distributed by partners in more than 40 countries worldwide. Our wide range of high-quality products includes a complete easy transfer system and other patient handling aids, stairlifts, car adaptations and bathing and toileting products.